

# ARCHITECTURAL PORTFOLIO

---

Reza khoshnood

2018-2023

Address  
Isfahan \_ Iran



## Contact

+98 992106423

## E-mail:

[Reza.khoshnood@gmail.com](mailto:Reza.khoshnood@gmail.com)

## Linkedin:

[www.linkedin.com/in/reza-khoshnood-556034200](https://www.linkedin.com/in/reza-khoshnood-556034200)

## Instagram:

reza.khoshnood

# Reza Khoshnood

Architect  
Graphic designer

## ABOUT ME

I am Reza Khoshnood, a skilled architect proficient in Rhino, SketchUp, Photoshop, Grasshopper, AutoCAD, and PowerPoint. With a deep passion for my field, I am committed to creating innovative designs that harmoniously blend aesthetics and functionality. Alongside my architectural pursuits, I derive great joy from sharing my knowledge through teaching. My portfolio reflects my dedication to excellence, showcasing my expertise in both design and education.

## EDUCATION

### BACHELOR OF ARCHITECTURE

Azad university of Khorasghan  
20017-2022

## EXPERIENCE

2021-2023 Future office

Worked as an architect and graphic designer at Future office

2022 Azad University

Rhino teacher at khorasghan university

Present Freelancer

Working as a freelancer

# رضا خوشنود

معمار  
طراح گرافیک

## درباره من

من رضا خوشنود هستم، با تسلط بر نرم افزارهای Rhino، SketchUp و Photoshop، AutoCAD، Grasshopper، PowerPoint، سعی می‌کنم طراحی‌های نوآورانه و منحصربه‌فردی ایجاد کنم که زیبایی و عملکرد را به همراه داشته باشند. به علاوه از تدریس نیز لذت می‌برم و تلاش می‌کنم دانش و تجربیات خود را به دانشجویان و علاقه‌مندان به معماری منتقل کنم. نمونه‌های کاری من، همچنین، نشان دهنده تعهد و علاقه‌مندی من به آموزش نسل جدید دانشجویان است.

## تحصیلات

لیسانس معماری \_ دانشگاه آزاد خوراسگان 01 - 97.

## تجربه های شغلی

دفاتر معماری فردا بعنوان معمار و طراح گرافیک 1402-1400

تدریس نرم افزار راینو در دانشگاه آزاد خوراسگان 1401

فریلنسر اکنون

## EXPERTISE



Google  
Sketchup



Rhinoseros



Autodesk  
AutoCad



Grasshopper



Adobe  
Photoshop



Adobe  
Illustrator



Adobe  
Aftereffect



PowerPoint

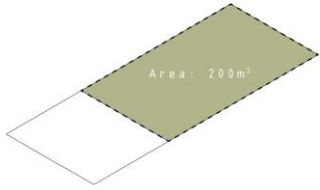


Enscape

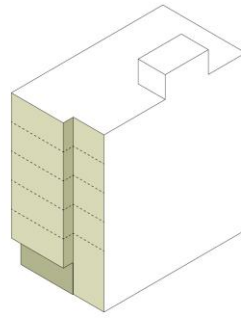


Twinmotion

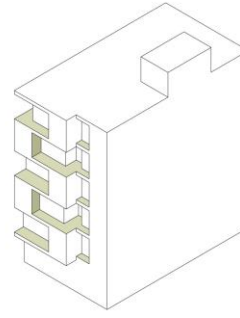
## مهارت ها



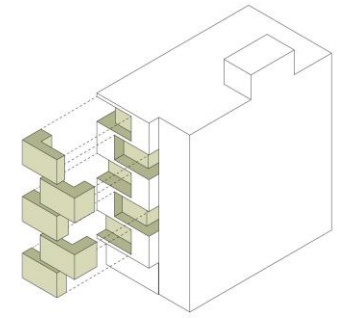
Base ground



Divide volume in 6 levels



Quality variation of open spaces



Subtract different volumes

# SHADOW HOUSE

Type: Residential

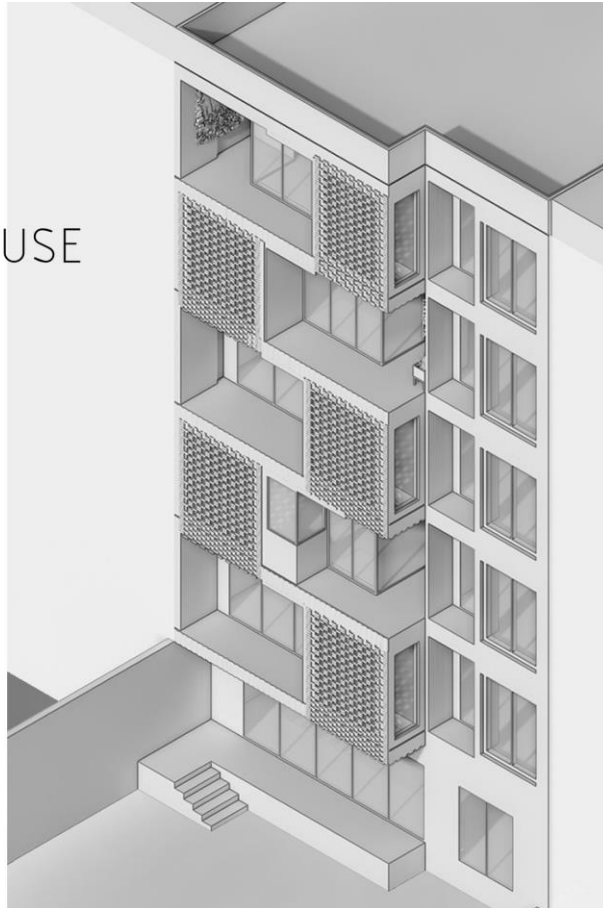
Location: Isfahan,  
Bozorgmehr

Area: 280m<sup>2</sup>

Architect: Horizon  
studio, Reza Khoshnood

Date: 2023

Scroll →





# Renovate project

Location : Parvin. st  
type: Interior design  
area:90 m2  
Year: 2021  
Designer: Reza  
khoshnood ,Ali yosefzade





# Renovate project

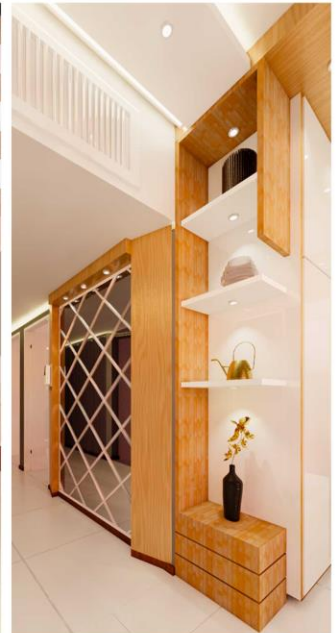
Location : Parvin. st  
type: Interior design  
area:90 m2  
Year: 2021  
Designer: Reza  
khoshnood ,Ali yosefzade

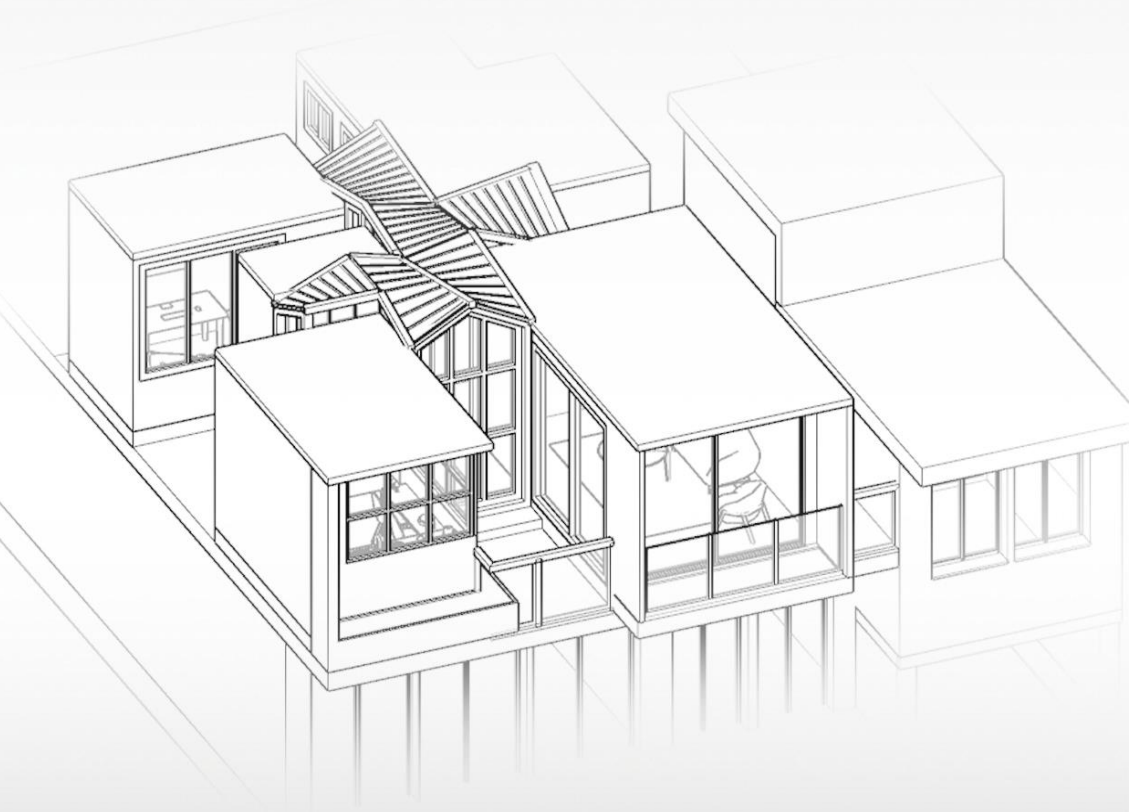


Before



Before

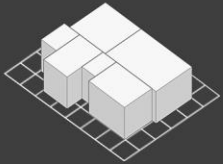




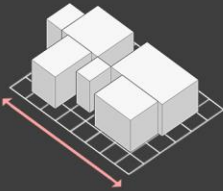
# EXPLODED HOUSE

# Design process

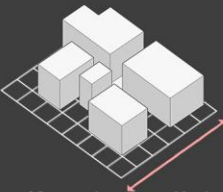
## Formation



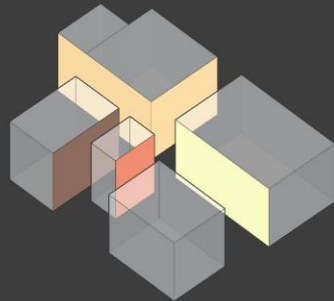
Basic form



Move and separate to X axis



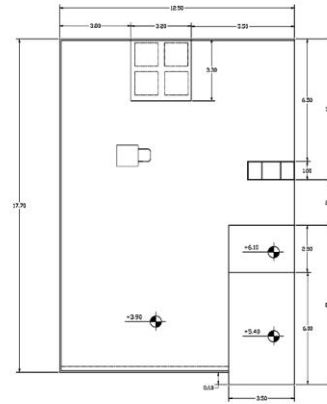
Move and separate to Y axis



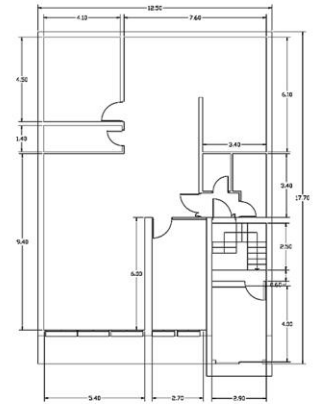
Paint inner sides of each space to have colorful and different quality of space

# Main building

## Plan



Roof plan



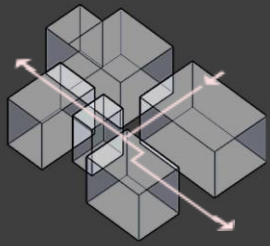
First floor plan



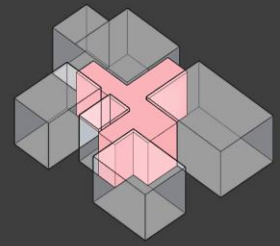


# Design process

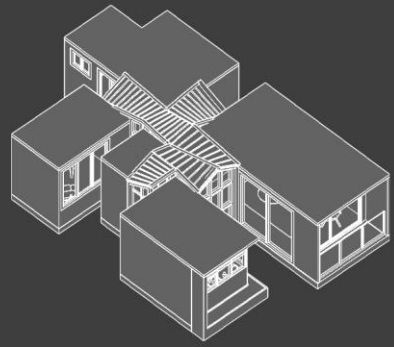
## Connection



Make a connection among spaces



Infrastructure of central corridor



Ambiguities form of roof of corridor demonstrates separation spaces

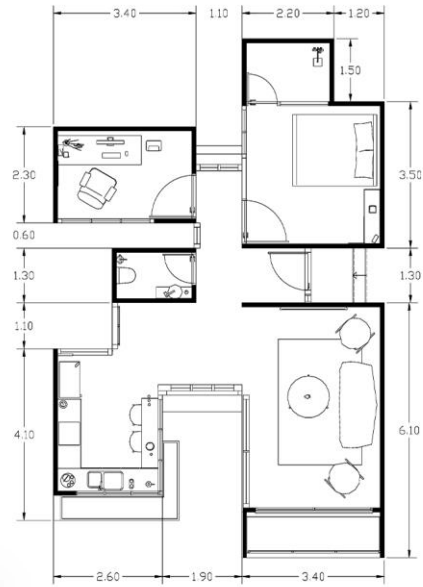
# Exterior design

## Southern facade



# Interior design

## Plan

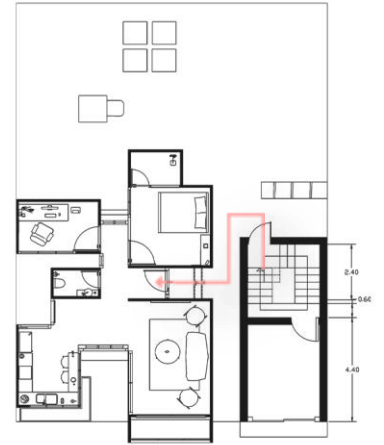


Second floor plan



# Interior design

## Entrance



Entrance way

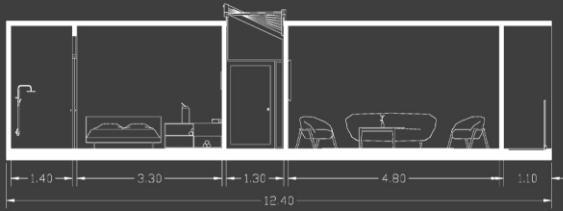


# Documents

## Sections



Section B\_B

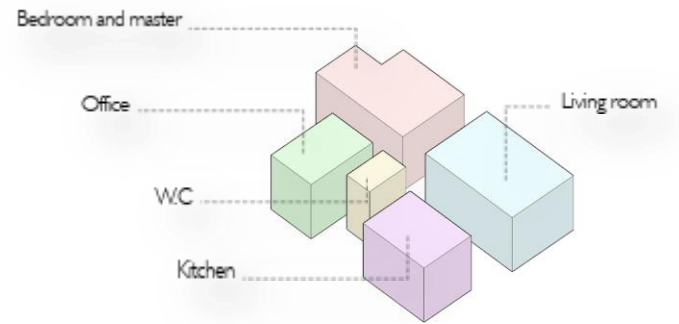


Section A\_A



# Organization

## Zone



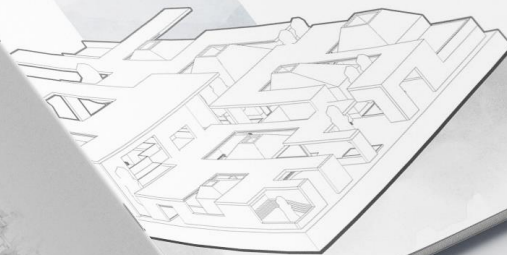


**SPACE SYNTAX** is a method used for spatial analysis of urban areas. It is able to calculate the degree of integration of the mobility network between urban blocks in terms of topological and geometrical distance, combined with metrics, radiuses. Space Syntax takes into account the angular relationship between street segments in its analysis, which has been shown to have a stronger correlation with human movement and the spatial configuration of the street grid than topological analysis. The Space Syntax method is used to analyze the accessibility and integration of different parts of a city or urban area.

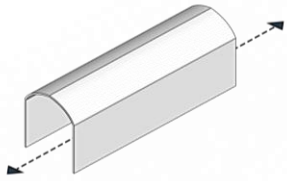


2023

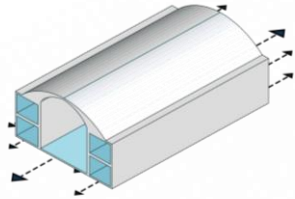
## CULTURE AND ART PAVILION



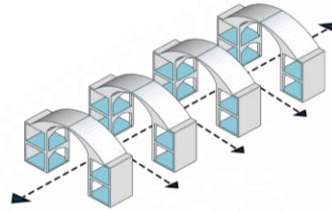
Reza Khoshmood  
2023



Bazar generic axes

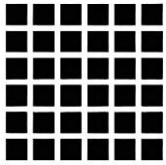


Space inside the walls



Active axes and space of Bazar

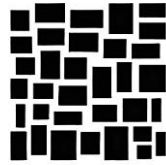




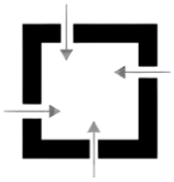
Regular grids



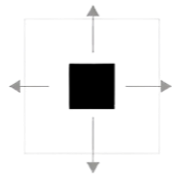
Organic city grid



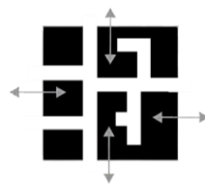
Organic irregular grid



Penetrable walls



Autonomous mass

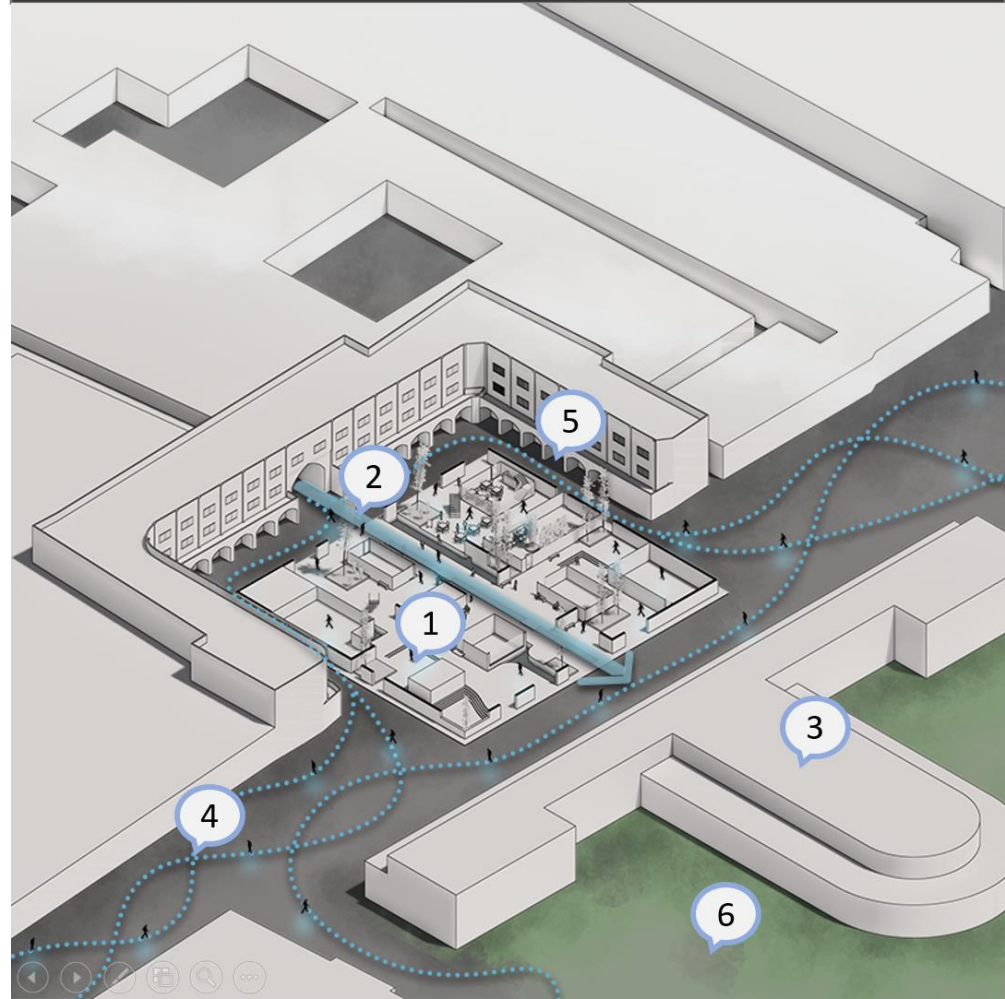


Penetrable plaza

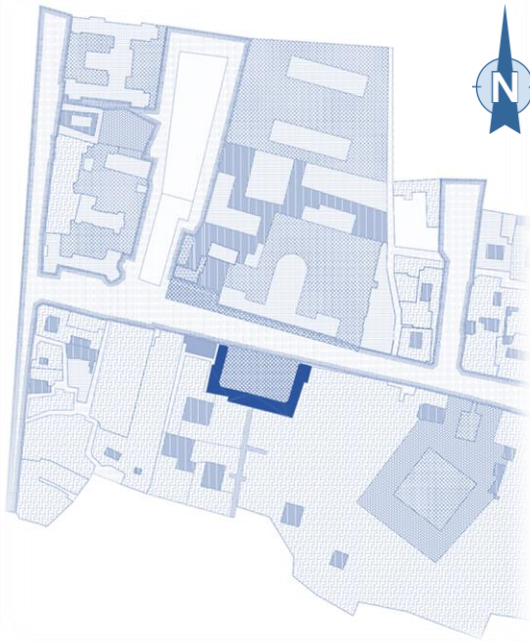
## INTERACTIONS















### OPPORTUNITY

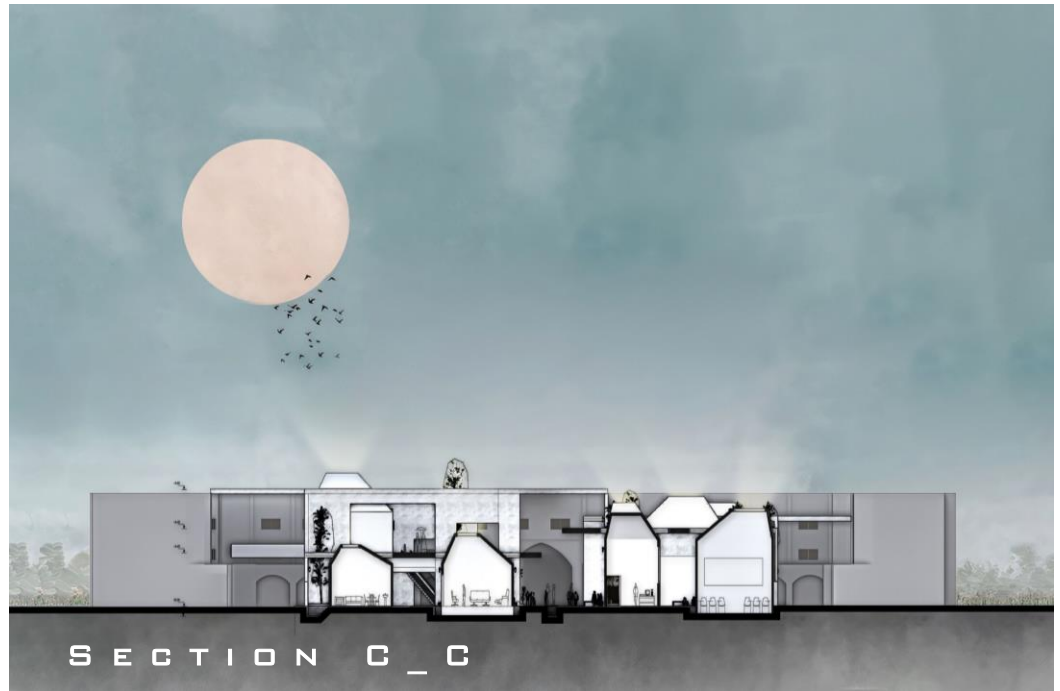
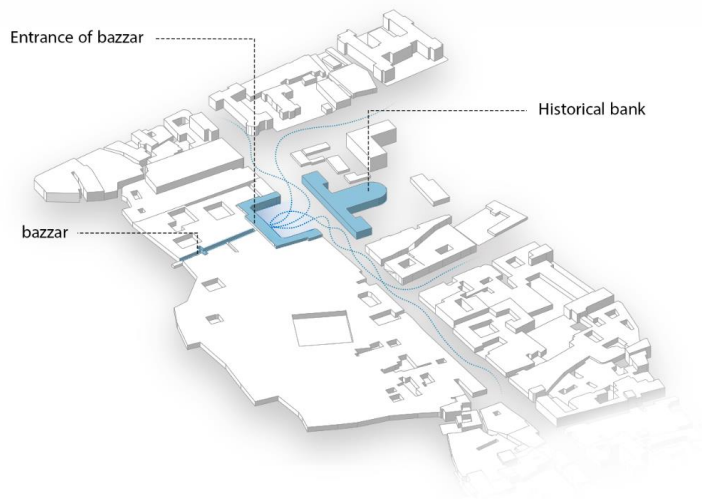
- 1) Culture and art Pavilion
- 2) Bazar axes
- 3) Meli bank museum
- 4) Pedestrian lines
- 5) Commercial façade
- 6) Green space

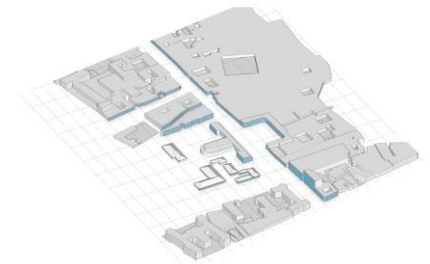




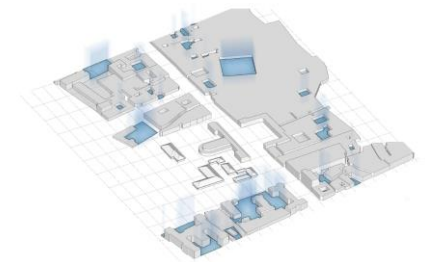


- external private space 
- conspicuous space 
- private public space 
- public private space 
- internal private space 
- third place space 
- retail space 
- interior public space 
- service space 
- public open space 
- undefined space 
- leftover space 
- interface space 
- civic space 





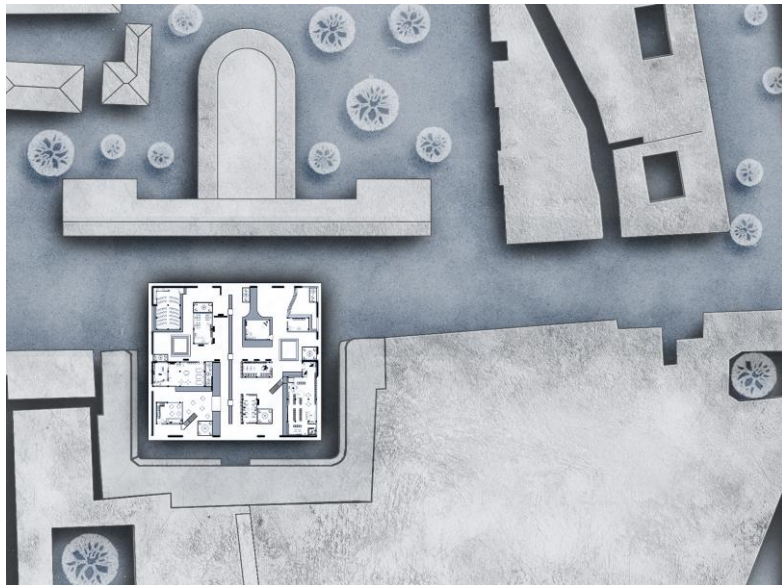
Street facades



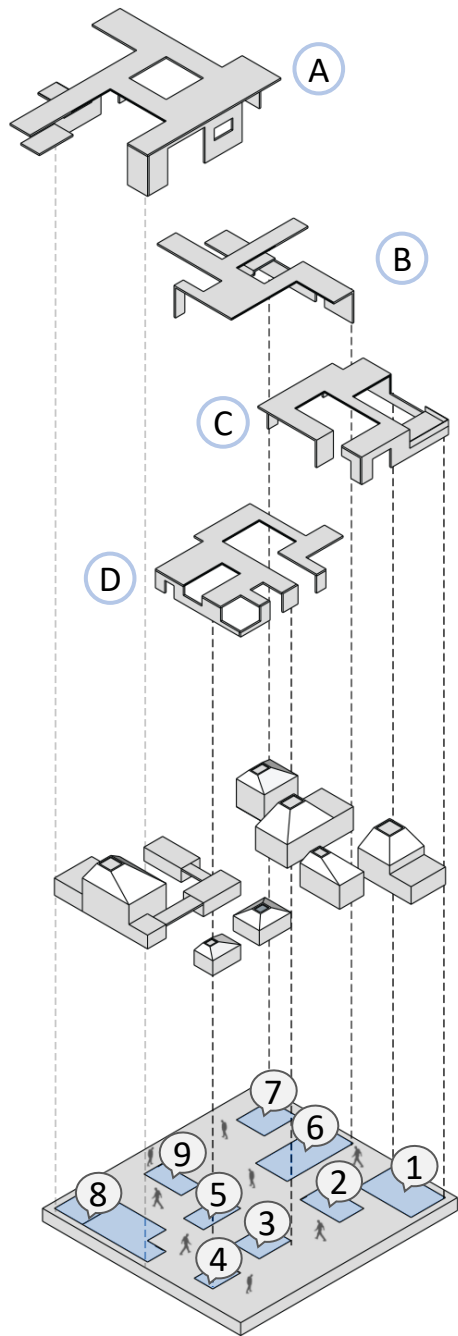
Private voids



Urban organization



**BUILT DENSITY:** Built density refers to the density of buildings or the built environment in a particular area. The most commonly used measure of built density is the floor area ratio (FAR), which is the ratio of floor area to land area. FAR is a widely used tool for regulating the size and scale of development on a given plot. It helps control the bulk and intensity of construction and ensures that buildings are not disproportionately large compared to the available land.



Surface A



Surface B



Surface C



Surface D

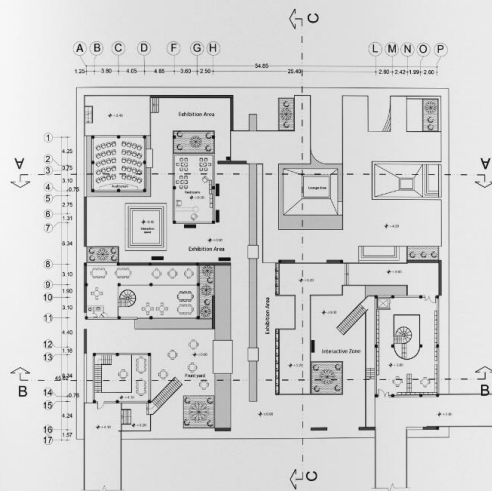
- |                |               |
|----------------|---------------|
| 1) Auditorium  | 6) Restaurant |
| 2) Rest room   | 7) Cafeteria  |
| 3) Lounge area | 8) Book store |
| 4) Flower shop | 9) W.C        |
| 5) Market      |               |

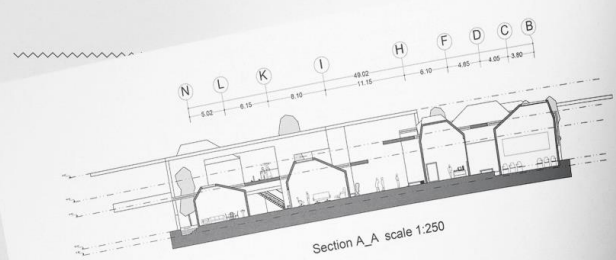


First floor plan

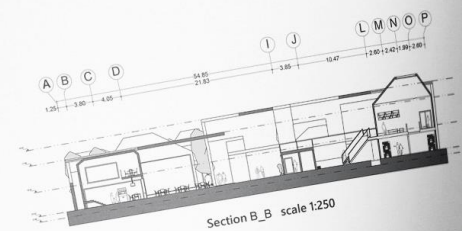


Second floor plan

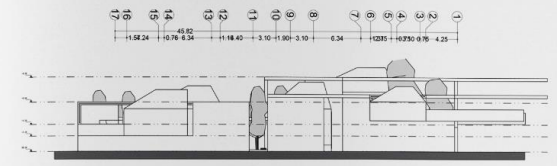




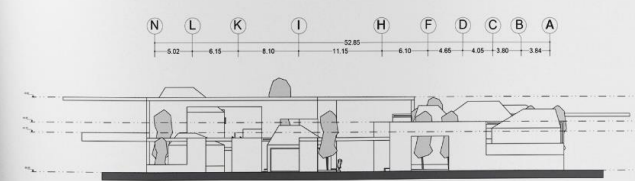
Section A\_A scale 1:250



Section B\_B scale 1:250



Left facade scale 1:250



Front facade scale 1:250

**IRAN EXPO 2050**

# Location

## Iran



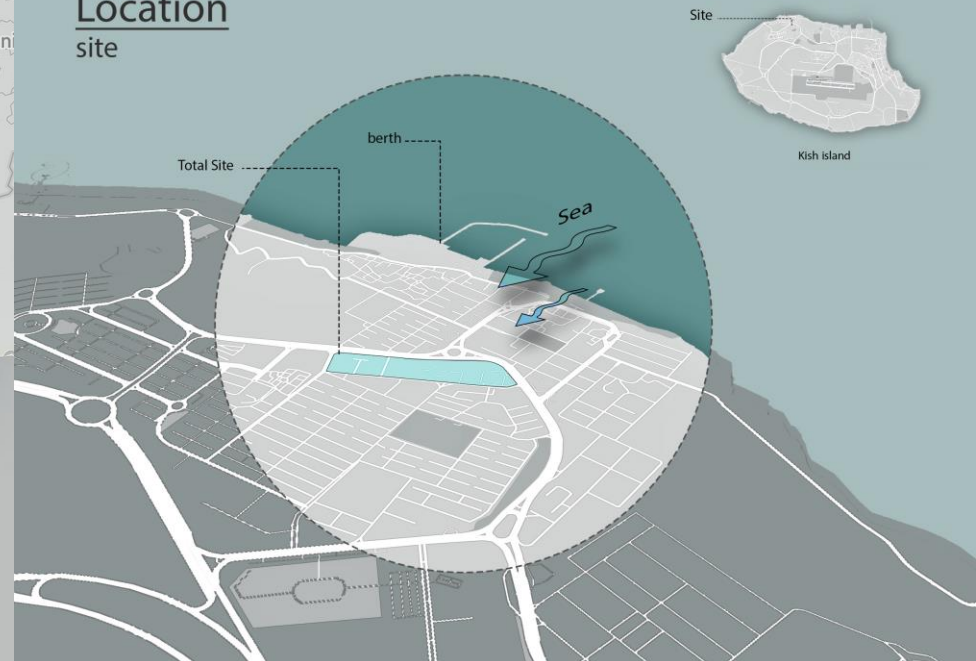
# Kish island

## Features



# Location

## site





# Accesses

Road and ways



Highway make loop  
Around island



Main connection ways



Commercial points

# Historical morphology



727 B.C



550 B.C



247 B.C



224 B.C



Iran 1925\_ Now



821



861



819



963



1148



1037



1098



1501



1736



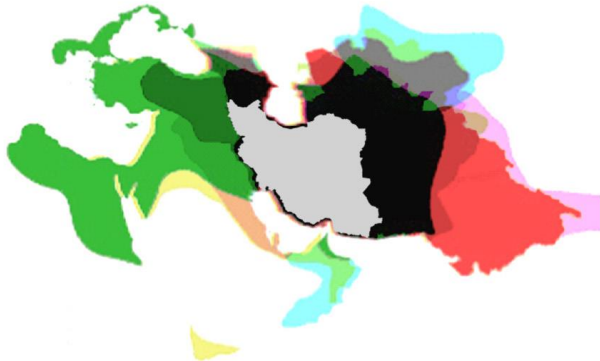
1751



1796



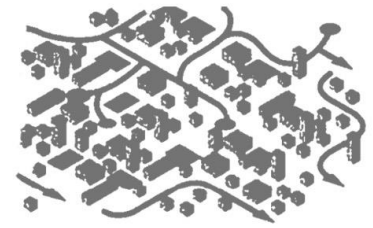
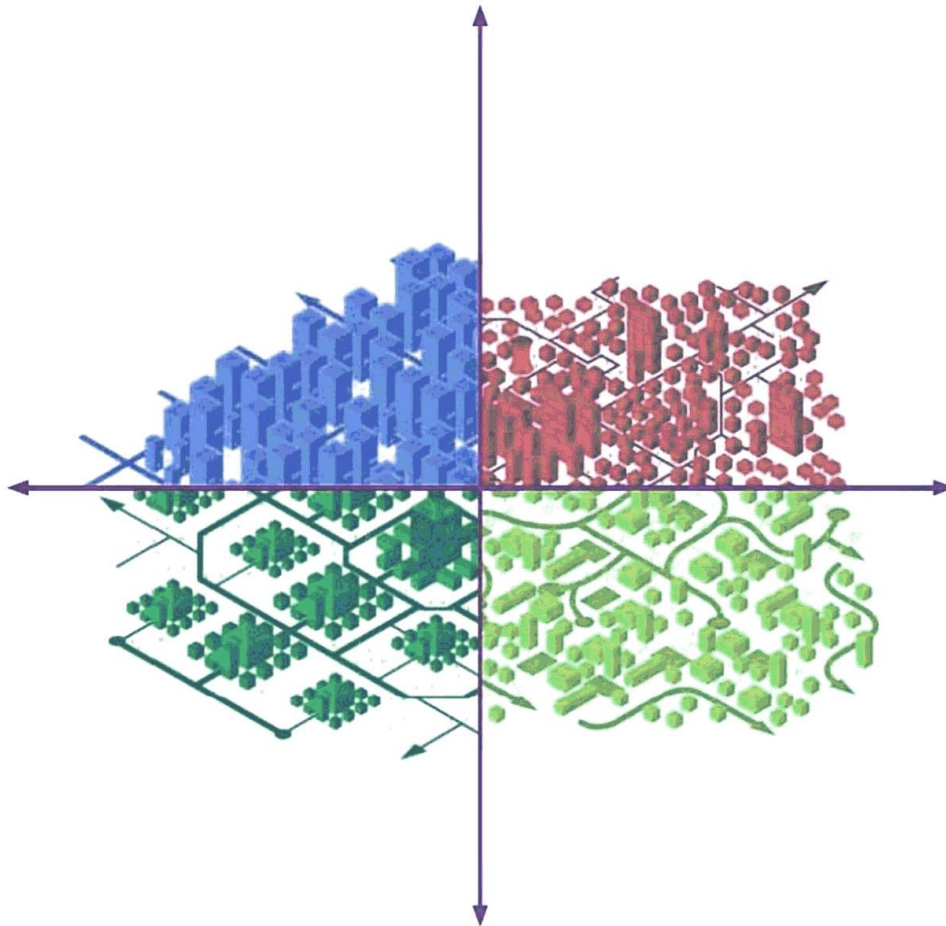
1976



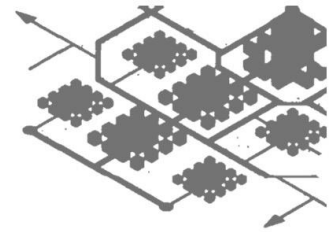
Combine types

# Typology

Different cities



Short with high distance



Block by bock

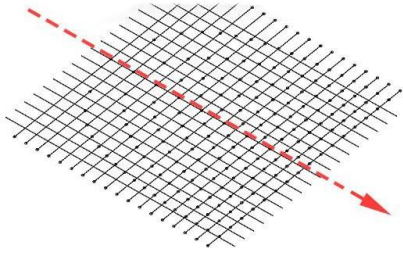


Under development

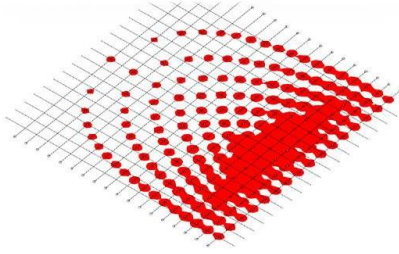


High and aggregates

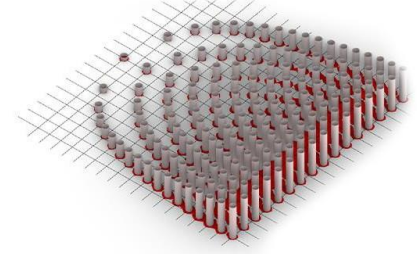




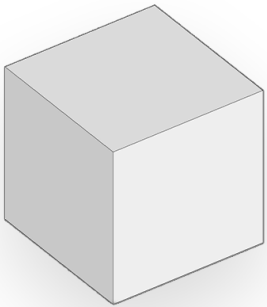
Increase density



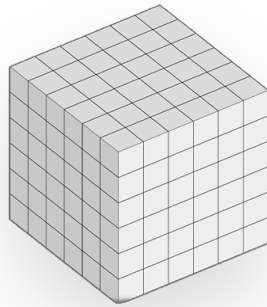
Affecting on context



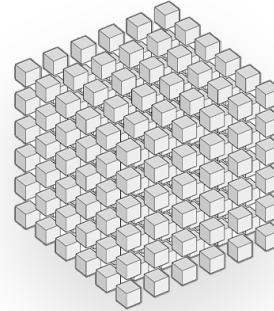
Affecting of aggregation



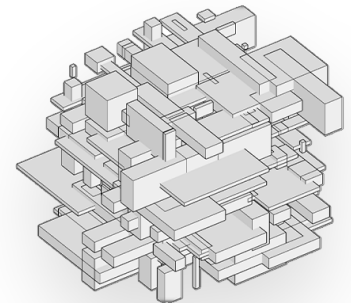
Base form



Divide



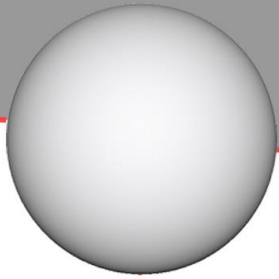
Fragment



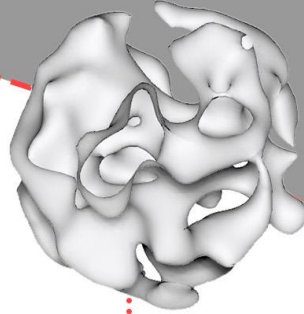
Random components  
scale



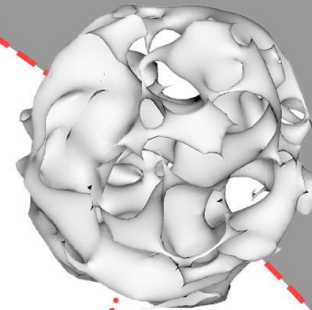
**How** to make ocular connection  
inside out?



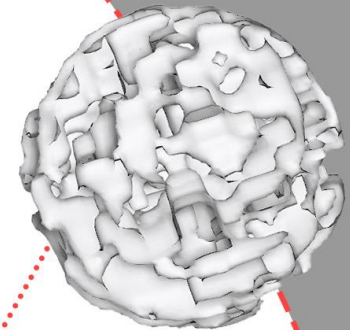
Simple shape



Turn into topology



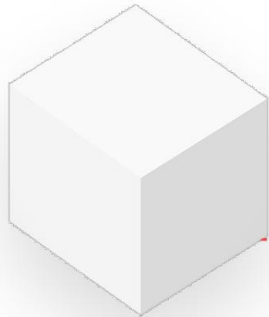
Increaseing intensity



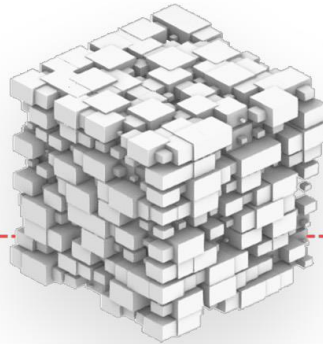
High aggregation

# Generation Topology

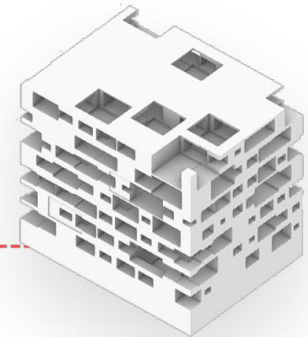
# Negative and positive space



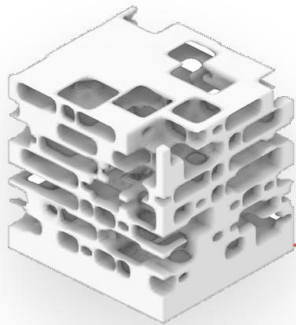
Main form



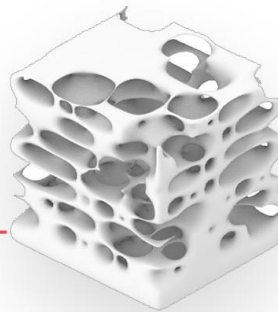
Break up



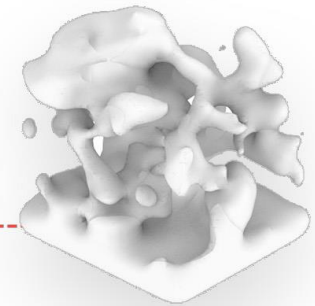
Negative space



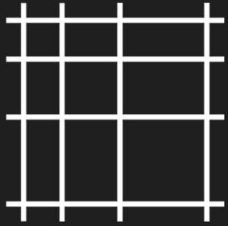
Soft edges



smooth



Density of empty space



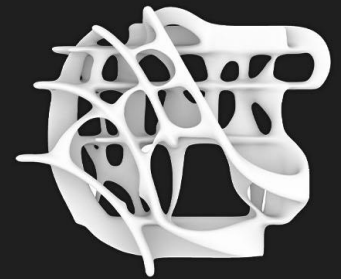
Sample grids



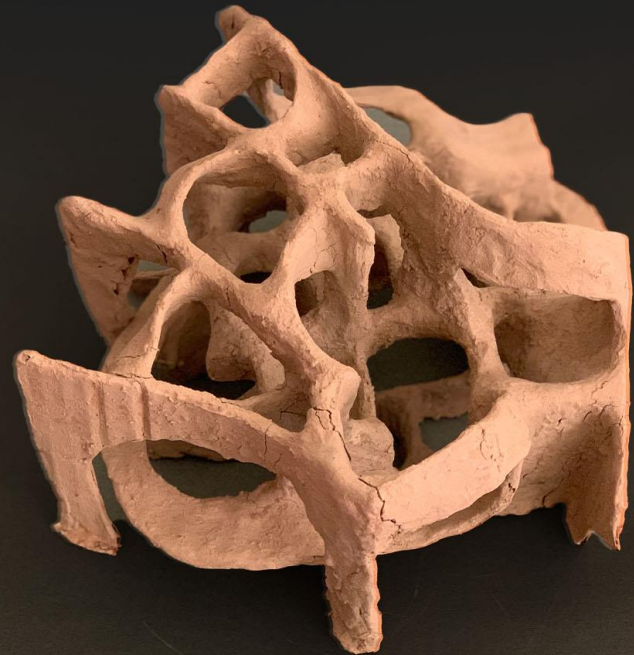
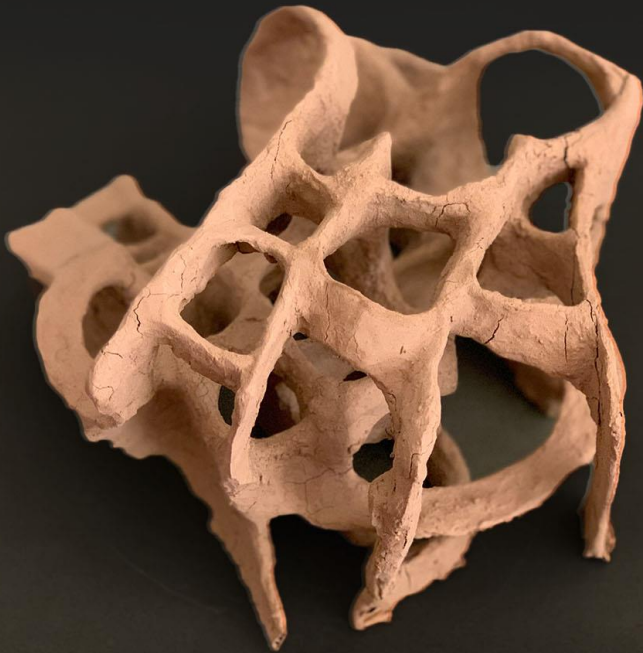
Sample grids



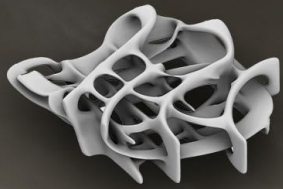
Juxtaposed and connect together



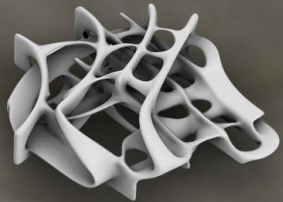
Deconstructed vertical lines



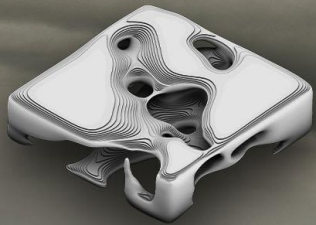




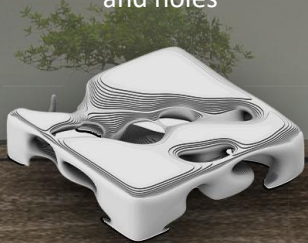
Extrude and deconstruct some line for making surfaces



Make holes on some surfaces and connect some surfaces together



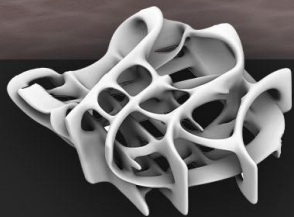
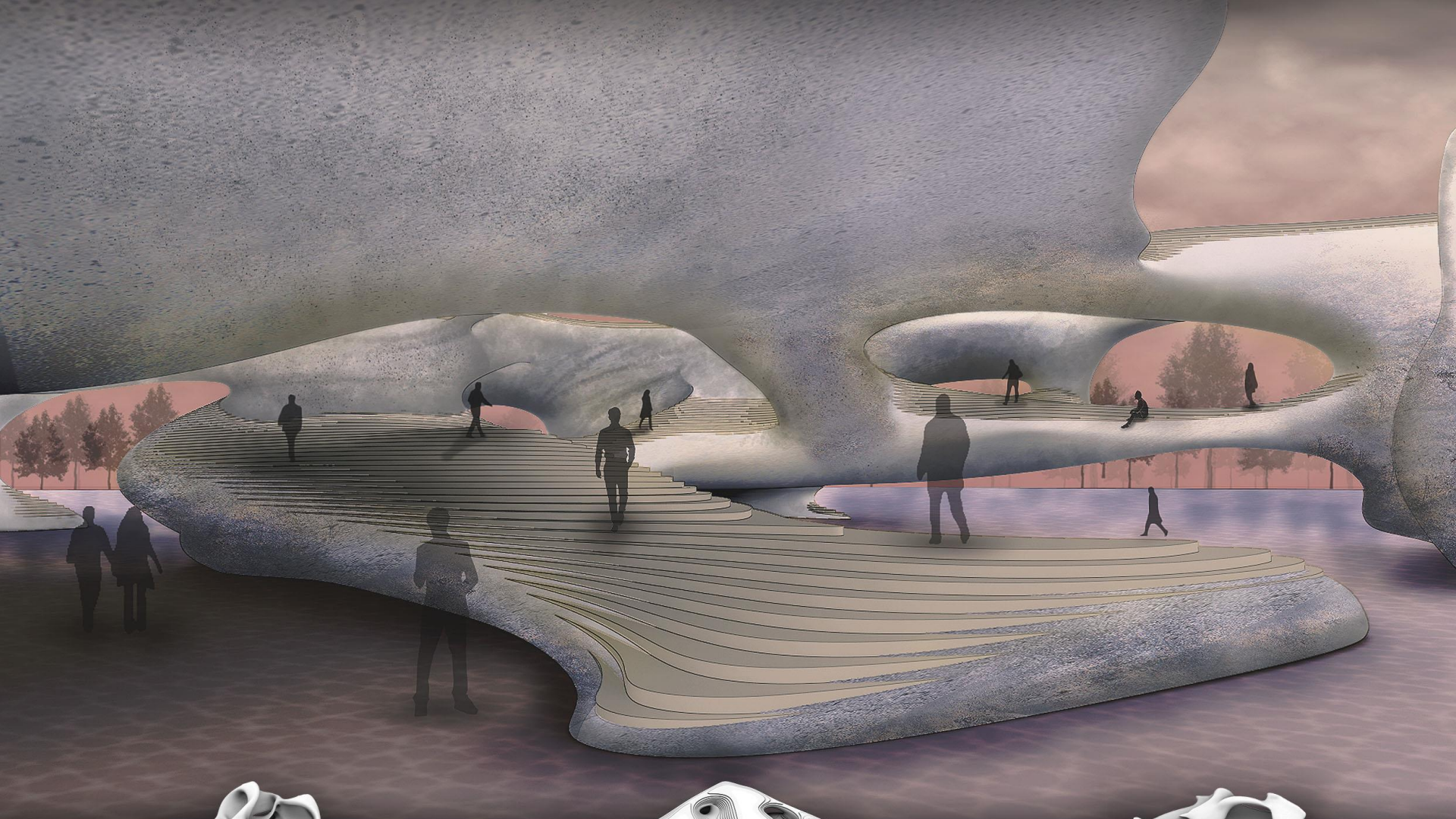
The affection of empty space and holes



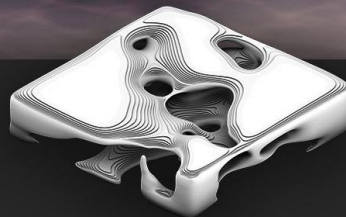
The affection of sample grid works like void



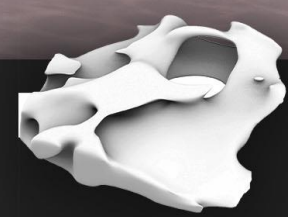




Components demonstrate the quality of the negative space as a main space

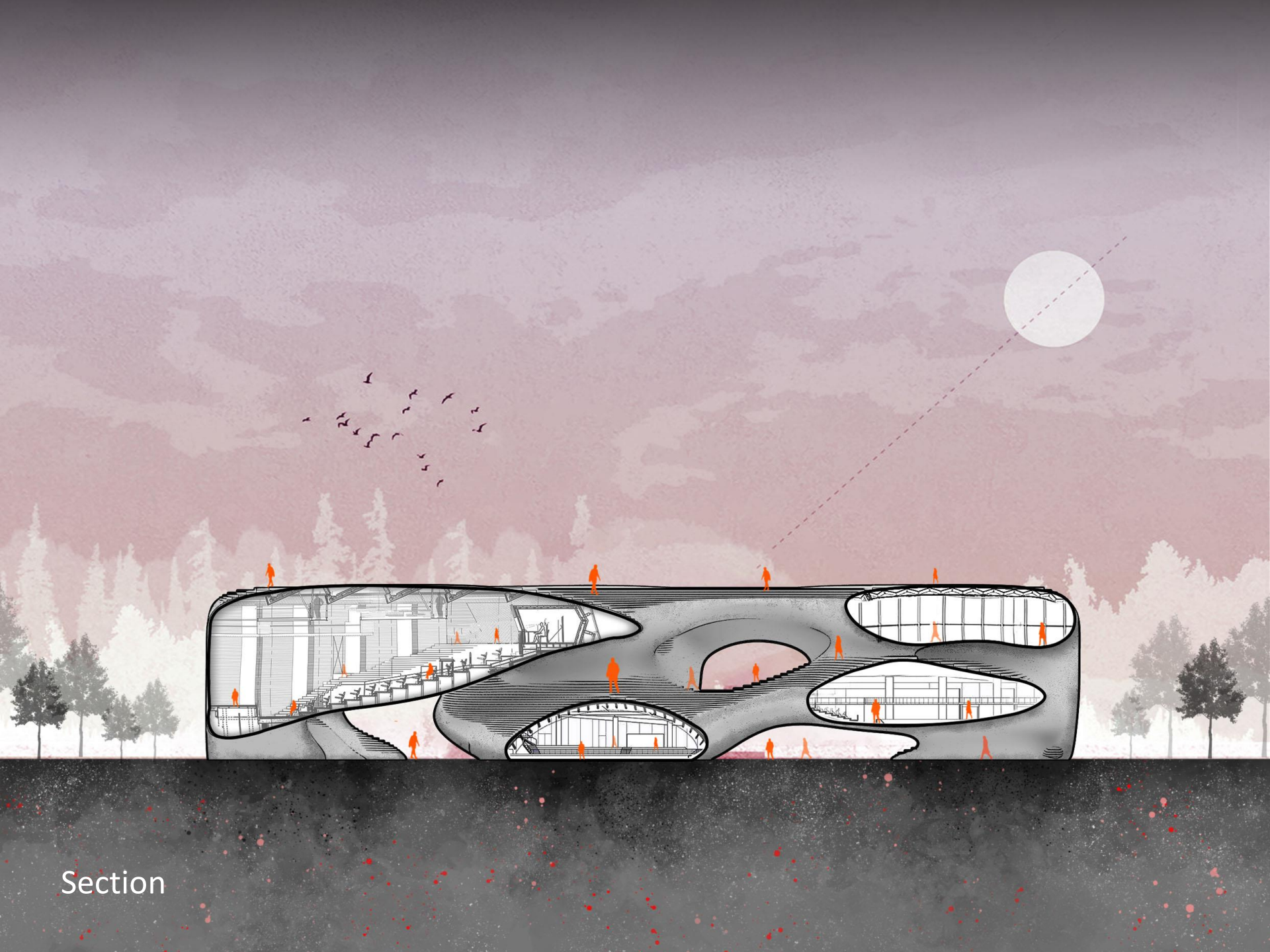


Boolean and smooth from last form makes unpredictable space with mass and voids



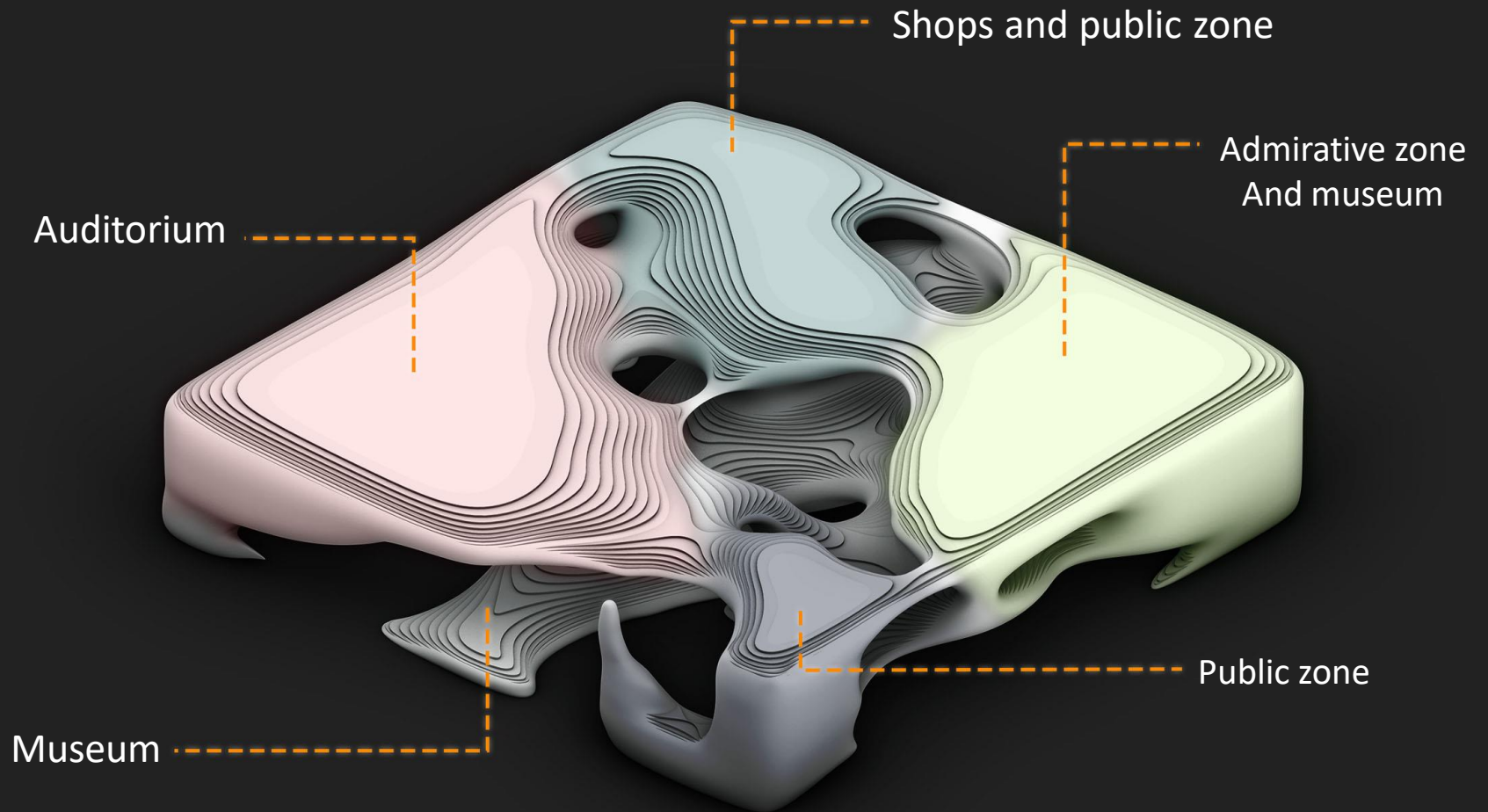
The hidden space of last form Provides spaces under that and define different qualities on each points

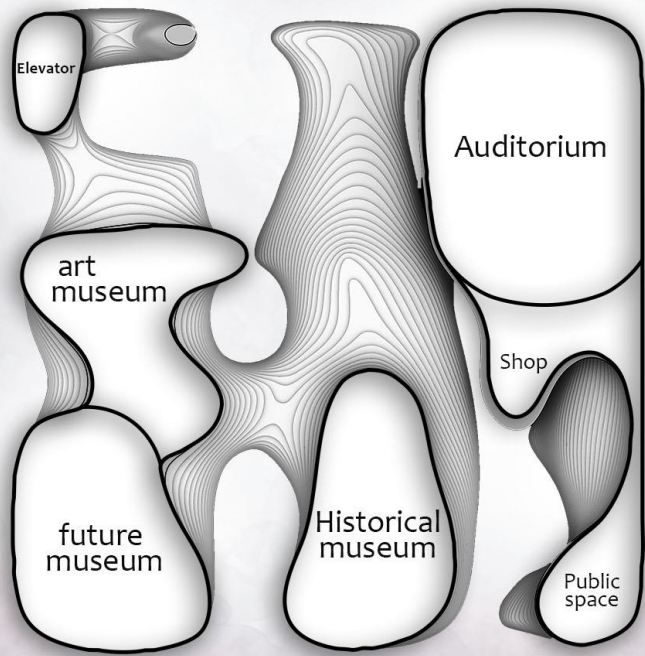




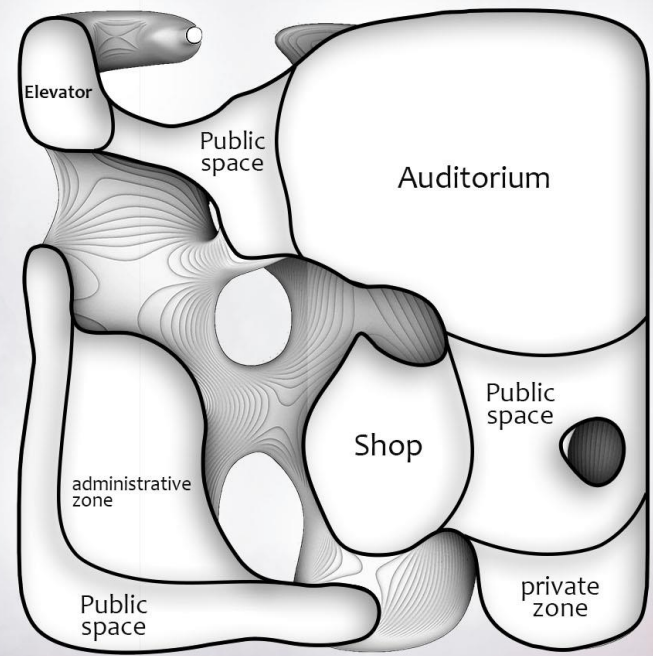
Section







First floor plan



Second floor plan



Southern facade



Northern facade

# ARCHITECTURAL COMPETITION



## مسابقه کار و زندگی ۲

---

برگزار کننده : مجله کوچه  
وضعیت : بدون رتبه







# مسابقه دانشجویی توس

---

جزوده اثر منتخب



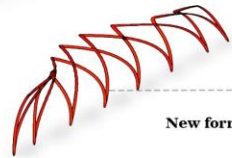


# پل دیدار

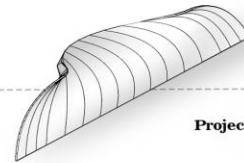


فرم سازه

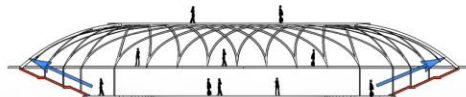
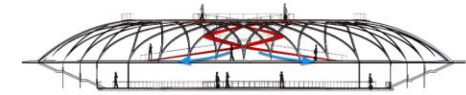
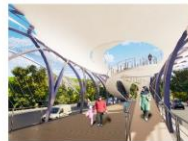
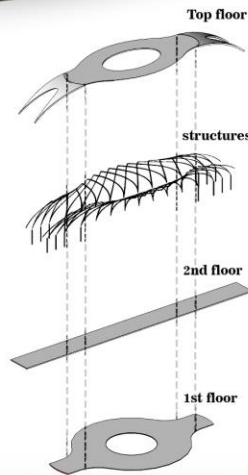
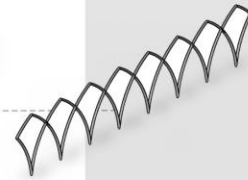
Structures form



New form

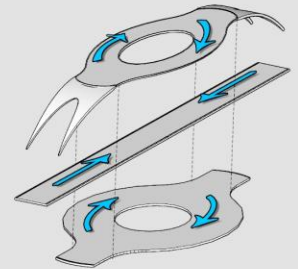


Project



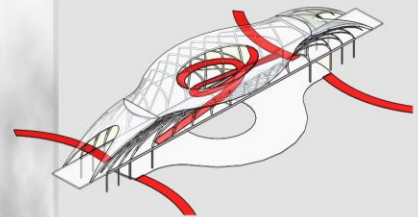
سیرکلاسیون افقی

Horizontal circulation



دسترسی ها

access



site plan



view of 1st floor

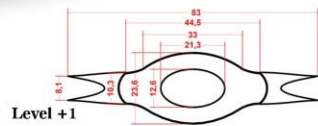


view of 1st floor

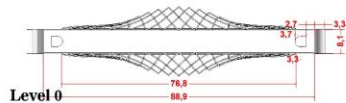
QEBHT11BPG



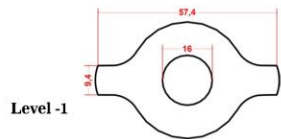
# پل دیدار



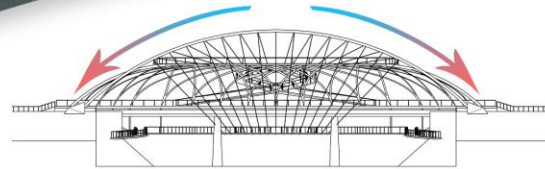
Level +1



Level 0

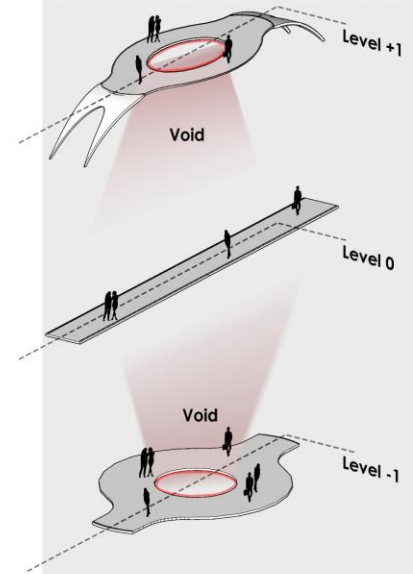
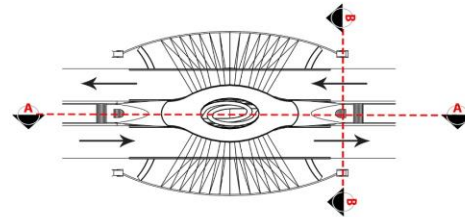
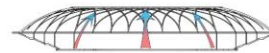
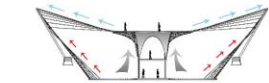


Level -1



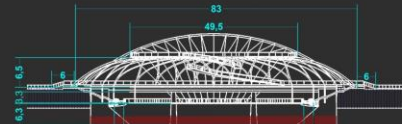
### توزیع نیرو

کنترل بار ناشی از طبقات ایجاد شده توسط نیرو کششی سازه ها کابلی بدون وارد کردن فشار اضافی به سازه و پایه ها پل موجود

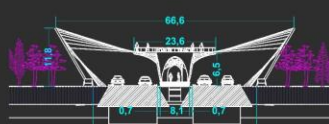


QEBHTI1BPG

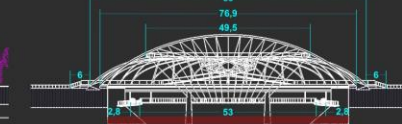
section B-B



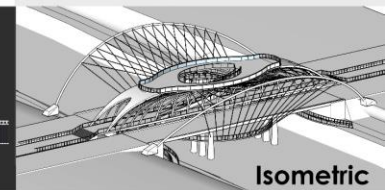
section A-A



view 1



view 2



Isometric